



i_Vision 1.5T

Liquid Helium Free Superconductive MRI System

- Zero Helium Magnet, low risk and low loss from quenching
- No need quench pipe, less limitations to the site selection
- Intelligent excitation unit ensures magnet safe in accidental case
- Fiber optical RF technology brings greater SNR and highly improves image quality
- Intelligent shimming technology to achieve homogeneity up to 0.05ppm in a second
- 16/24/32 channel parallel acquisition achieves higher scanning speed
- Electric patient table with whole body integrated coil units
- GSM intelligent monitoring system
- Mobile device control and remote image review
- High performance workstation with comprehensive sequences and functionalities
- DICOM 3.0 fully compliant

Liquid Helium Free

Brings More Possibilities

Unlimited by Helium

No liquid helium

No fear of quench and power failure

Unlimited in Use

Equipped COOL-mate Intelligent Control System

Automatic ramping down in case of emergency

Unlimited by Space

No quench pipe

Less site requirement and limitation



i_Space 1.5T/i_Field 1.5T

Superconducting MRI System

- 60cm/71 cm bore diameter
- Fiber optical RF technology brings greater SNR and highly improves image quality
- Intelligent shimming technology to achieve homogeneity of scan area up to 0.05ppm in a second
- 16/24/32 channel parallel acquisition achieve higher scanning speed
- Zero helium boil-off
- GSM intelligent monitoring system
- Mobile device control and remote image review
- High performance workstation with comprehensive sequences and functionalities
- DICOM 3.0 fully compliant



i_Open Series

Permanent MRI System

- C-Shape permanent magnet with magnetic field strength of 0.36T/0.4T
- Two-pillars structure permanent magnet with magnetic field strength of 0.5T
- Passive + digital shimming
- Whole body MRI with patient gap 390 mm±10 mm
- Low maintenance and running cost
- Phase array receiving coils, 2-4 channels digital spectrometer
- Comprehensive sequences and functionalities: SE, GE, IR, FSE, FGE, MRA, STIR, FLAIR, MTC, MRCP, TOF, etc
- High performance workstation with DICOM 3.0 compliance





CGO Series

FPD Angiographic & Cardiac System

- High frequency 100kW generator
- Large capacity of X-ray tube assembly
- Floor mounted C-arm, large range of movement along three concentric axes, affiliated with 2 meters longitudinal movement of cath-table enables head to toe examination/treatment without moving patient
- Cath-Table: four-way floating of tabletop, electric up/down movement
- Multiple anti-collision system thanks to the technology of real-time software simulation, capacitive sensors, detector self-balance
- Low dose imaging and multiple radiation protection
- Motorized rotatable 40cm×30cm CsI FPD
- 2048×1536 high resolution with 30 fps image acquisition rate
- InvaRay 4.0 intelligent imaging platform, DSA
- Comprehensive image processing workstation capable of handling various complicated procedures
- Outstanding data safety and DICOM 3.0 compatibility

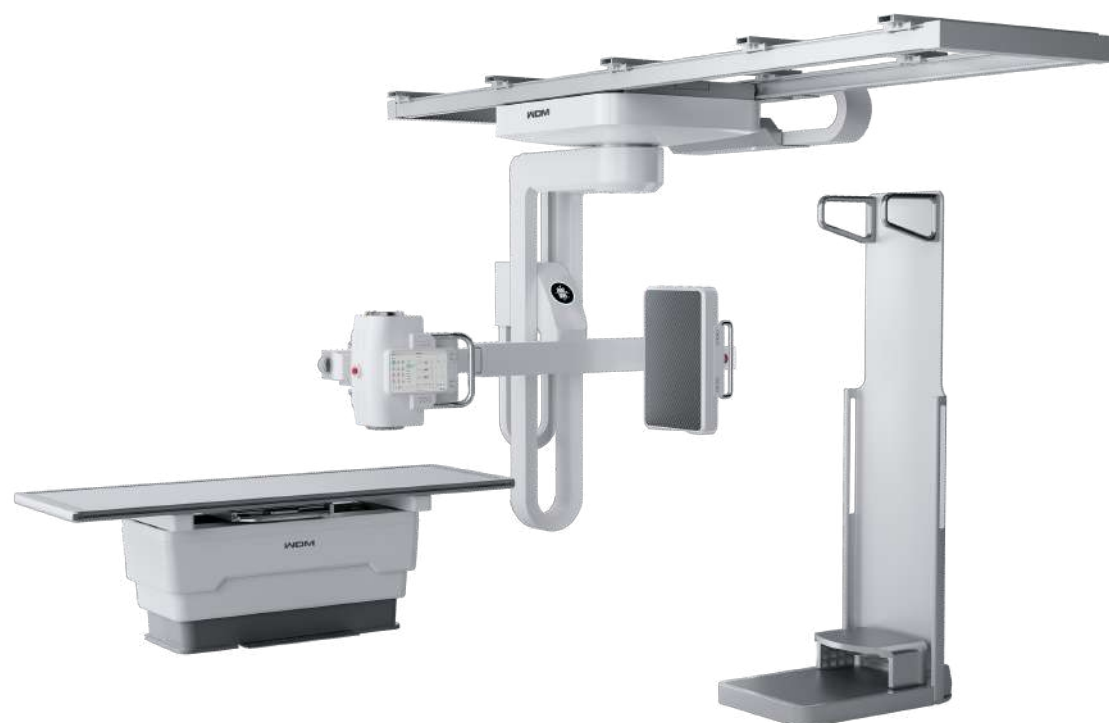
TURBOTOM Series

Computed Tomography System

- 32/64/128 slice CT
- 76cm large aperture, open for diverse clinical use
- 5MHU liquid metal bearing tube
- High-definition imaging at reduced dose
- Physical inclination $\pm 30^\circ$ provides precise scanning field
- Automatic lifting table
- 0.49s/r + 0.5mm slice thickness
- Pediatric-specialized low dose protection protocol
- Tele-eye 3D AI navigation system

(subject to specific model)

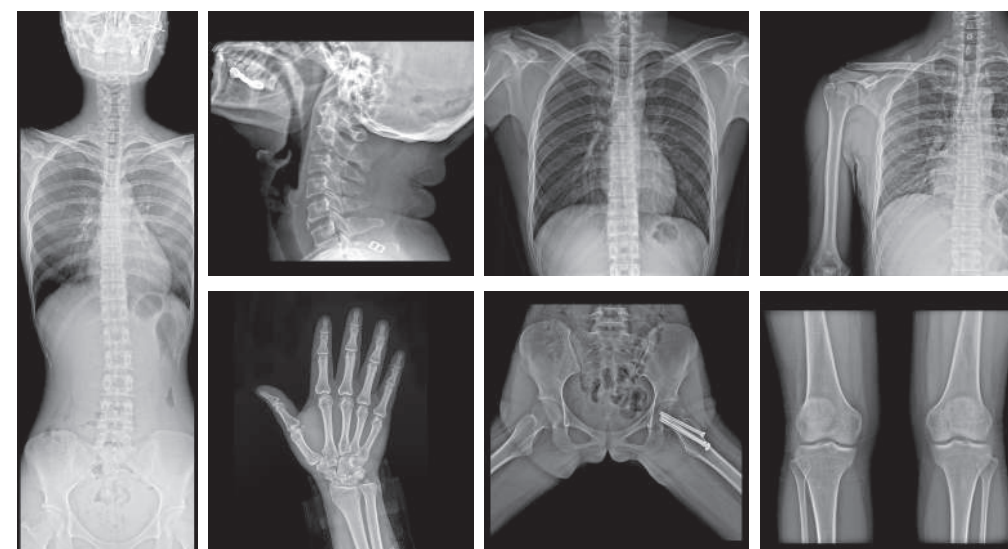




WD-CBCT 600 Series

Weight-Bearing 3D Imaging System

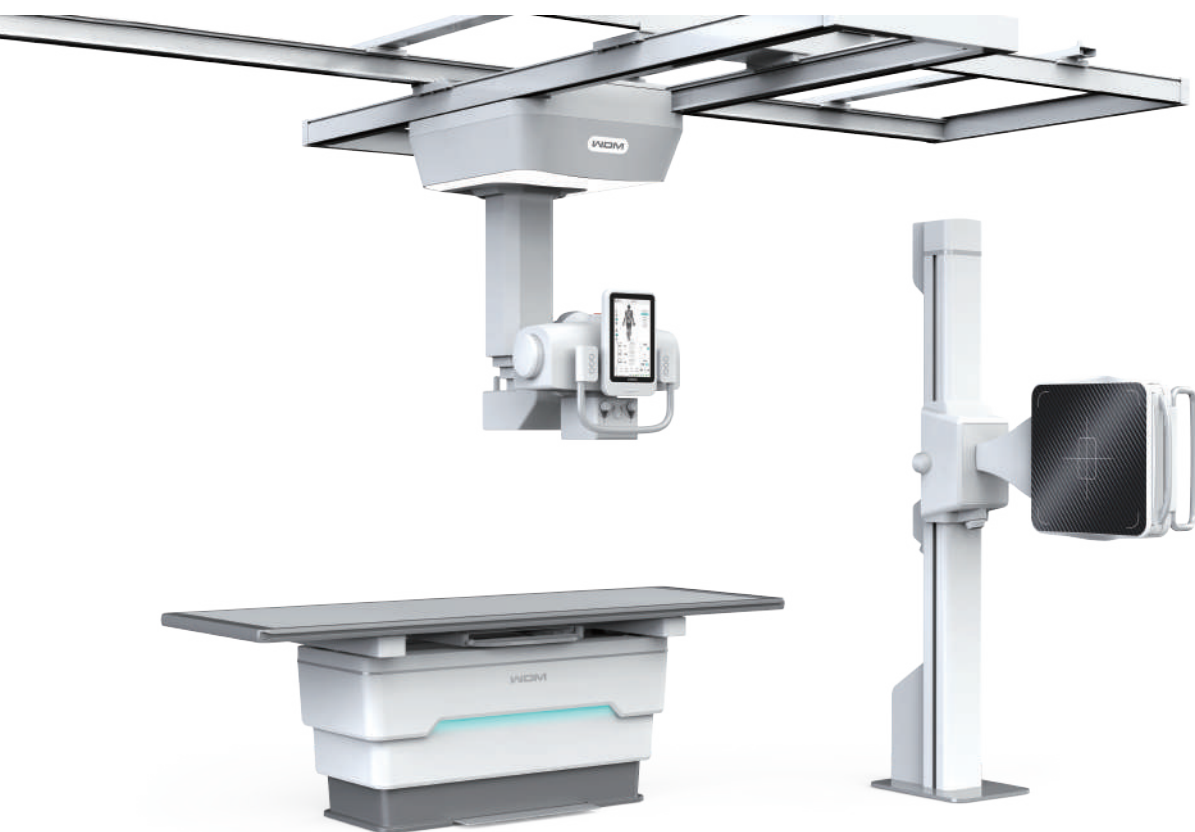
- Stable and high output
- Large anode heat capacity meets the demands of fluoroscopy and CBCT
- Dual-screen supports simultaneous display of fluoroscopy and visualization
- Flat panel built-in AEC leads to precise dose control
- Large size of touch pad on the tube-side
- Wireless remote control enables adjustment in the control room



New Oriental 1000L Series

Fully Automatic Ceiling Suspended Panorama DR

- Specialized solution for full spine and lower extremity weight-bearing imaging and scoliosis detection
- Extremely rapid full frame imaging within 12s
- 1 exposure at 30% of conventional stitching dose
- Super wide-angle projection supports imaging length up to 120cm in one shot
- MIX balanced imaging technology ensures balanced and consistent imaging



New Oriental 1000F Series

Fully Automatic Ceiling Suspended DR

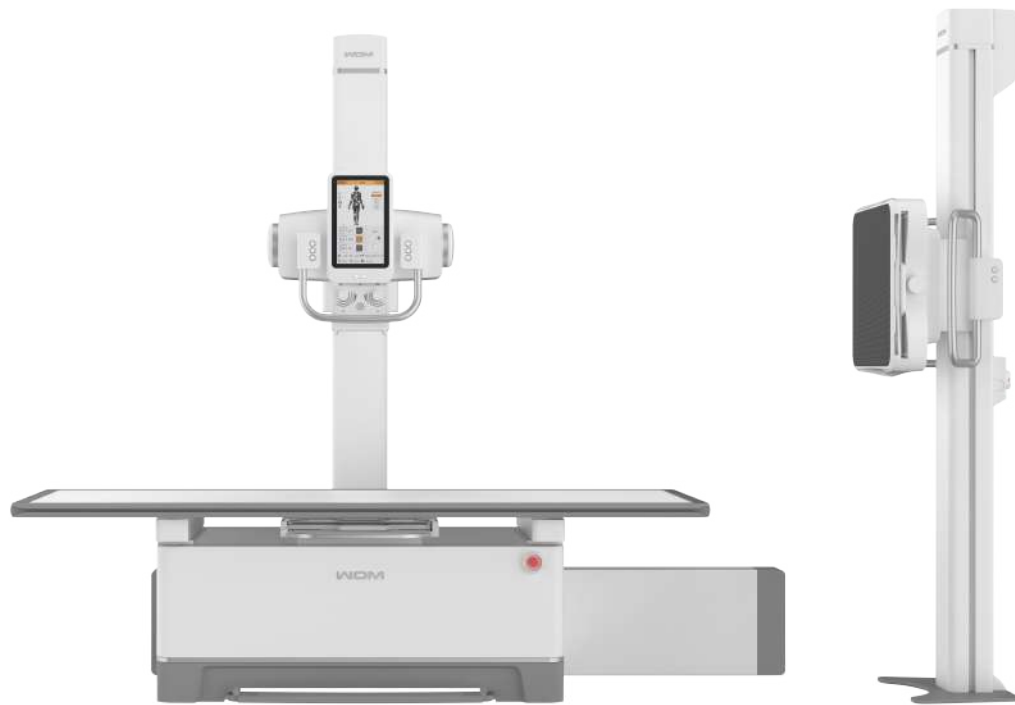
- Ceiling suspended tube column with six-direction fully electric moving
- 17" × 17" large size wireless FPD, 139um, 3kx3k and optional 100um, 4kx4k
- Higher resolution and more details acquired by lower dose
- Automatic fast switch to programed positions
- X-ray projection auto collimation to the detector
- 4-way floating bucky table with electric elevation
- Large size LCD touch screen control for fast positioning program, parallel setting of exposure parameters and instant image preview
- Powerful INVARAY digital imaging platform
- Automatic image stitching (optional)
- Removable grid (optional oscillating grid)
- DICOM 3.0 compatibility



New Oriental 1000U Series

U-arm DR

- Compact and self-balanced U-arm structure enable installation without any auxiliary support in a minimized space
- Fully automatic (motorized) positioning, fast switch to programed position
- 17" × 17" FPD, 3kx3k pixel matrix
- Large size LCD touch screen control for fast positioning program, parallel setting of exposure parameters and instant image preview
- Infrared anti-collision protection
- More than 600 APR programs for doctor's reference
- InvaRay digital imaging platform
- Optional dynamic FPD enables both fluoroscopy acquisition up to 25fps and spot image acquisition
- Optional stitching (for dynamic version only)
- DICOM 3.0 fully compliance



New Oriental 1000N Series

Integrated Floating Table DR

- Classical RAD room structure, ease of use
- Motorized vertical moving of X-ray tube, auto tracking to the detector
- Large size LCD touch screen, enable parallel setting of exposure parameters and instant image preview
- 17" ×17" FPD,wireless
- Optional dynamic FPD enables both fluoroscopy acquisition up to 25fps and spot image acquisition
- Optional image stitching
- InvaRay digital imaging platform
- DICOM 3.0



New Oriental 1000N Series

Floor-rail Tube Column DR

- Motorized vertical moving of X-ray tube, auto tracking to the detector
- Large size LCD touch screen, enable parallel setting of exposure parameters and instant image preview
- Wireless FPD detector, 17" ×17"
- More than 600 APR programs for doctor's reference
- InvaRay digital imaging platform
- Optional elevating bucky table
- Optional fully automatic stitching
- DICOM 3.0



M40/50/600 Series

Mobile DR Unit

- High frequency 40kW / 50kW DR unit
- Large FPD 43cmx35cm / 43cmx43cm with WiFi connectivity
- Optional 24cmx30cm WiFi FPD for pediatric application
- Touch-screen console
- Flexible tube arm
- FPD battery auto recharging (in detector parking slot)
- Built-in large capacity battery pack for over 1000 exposures
- Optional electric driven cart
- Compact structure, better adaption to narrow space



Hypernova-Y Series

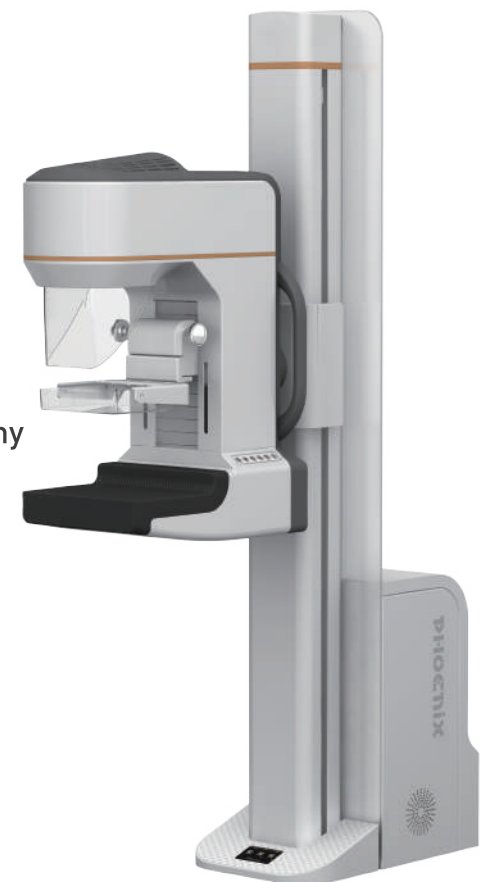
Mobile C-arm X-ray Machine

- Ensuring precision and efficiency in every surgical procedure
- Excellent performance: 30/60 fps, 139 μ m FPD, 0.3/0.6mm focal spots, 200 kHU anode heat capacity
- Flexible movement: 360° self-balancing rack supports motorized C-arm elevation and swing
- Efficient operation: 884mm wide open / 708mm large arc depth, Bi-directional laser positioning system

DM-2/2A

Full-field Digital Mammography

- Advanced 24cm x 30cm full-field FPD detector
- High frequency 4.8kW generator
- AEC function
- High image quality with low radiation dose
- More comfort and safety during examination
- Powerful image processing function





DRF Series

Dynamic FPD RF System

- High frequency 50/80kW generator
- Advanced dynamic FPD technology
- High acquisition rate up to 30fps
- Remote controlled diagnostic table 25°/45°/90°
- Variable SID, Max.1.8 m
- Powerful image processing function
- Optional oblique projection $\pm 45^\circ$
- Optional tomosynthesis
- Optional static/dynamic stitching
- Optional elevating table